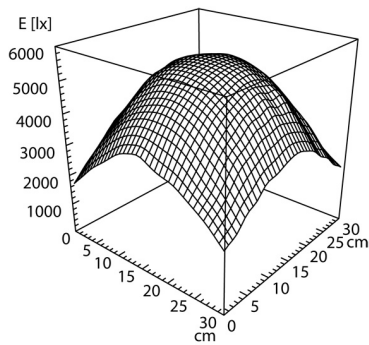
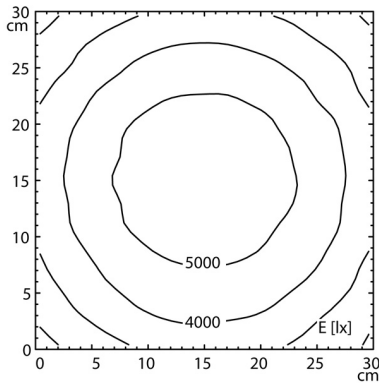
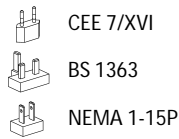


CE



light source	LED
work equipment	electronic plug-in ballast
connected load	100-240 V, 50/60 Hz
power consumption	env. 13 W
luminous flux	approx. 750 lm
light distribution	direct
direct ratio	approx. 100 %
colour temperature	neutral white
colour temperatur	approx. 4.000 K
color rendering index (CRI)	>= 90 (R9>50)
chromaticity tolerance LED	< 3 SDCM
system of protection	20
class of protection	II
technology	multi-stage switchable; continuously dimmable
operation	multi-function switch
housing	plastic; untreated; black
cover	screen, milky; Polyamide
arm	tubular aluminium section; anodized; aluminium coloured anodised
balance of articulation joints	spring
weight (net)	env. 2,5 kg
mains lead	approx. 3.6 m; mains plug; CEE 7/XVI; BS 1363; NEMA 1-15P
fastening	screw-down flange
lens, dimensions	Ø 160 mm
lens material	glass
lens, diopters	3,5
special features	light characteristic can be adjusted with a three-way switch