



**SMALL MACHINE, BIG PERFORMANCE**  
**THE NEW SYLVAC-SCAN S25T !**

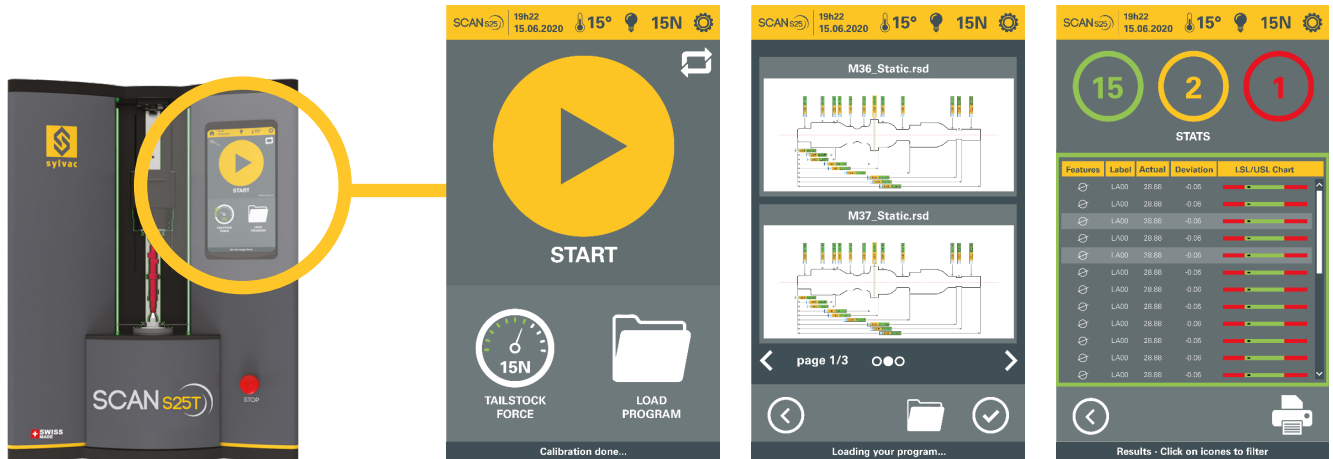


## Your benefits

- High resolution and **high accuracy** <1µm diameters / <3µm length
- Moving optics with **tilt 0-30°** for comprehensive **thread measurement**
- New **custom thread wizard** software
- **Scan speed** 60mm/s, move 120mm/s
- Full 2D scan of part in **3 seconds** !
- **High resolution** rotary axis 0.0003°
- **Easy to use** yet powerful Reflex-Scan+ software
- **New touch pad** operator control panel for ease of use on the shopfloor (In addition to standard PC)
- **Automation ready**, motorised tailstock, I/O connectivity and pneumatic preparation
- **Quick release** tooling with ISO MT2 adaptor
- **Dynamic LED status bar** (classification, status & tailstock force)
- **Compact design** W450 x D520 x H590mm (desk top)

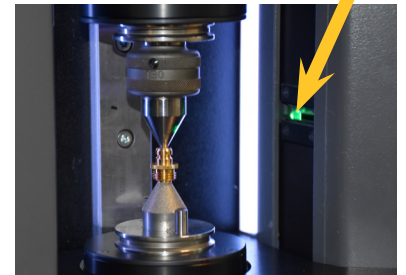
## Scan 25T operator panel

NEW touch pad operator control panel, enhancing the ease of use for operators directly on the shopfloor. The touch pad can be used to, measure parts, review results, print and make programs with Reflex-Click auto measure. No need for operators to interact with the main PC.



## Scan 25T - Tilt axis

The new Sylvac-Scan S25T is fully equipped with our renowned tilt axis, which inclines up to a 30° helix angle.



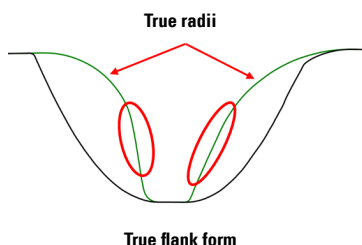
## Scan example of bone-screw with and without tilting

Tilting the optics to match the helix angle of the thread being measured, reveals multiple elements on the thread profile that would otherwise be hidden such as, minor diameter, root radius and flank angles.



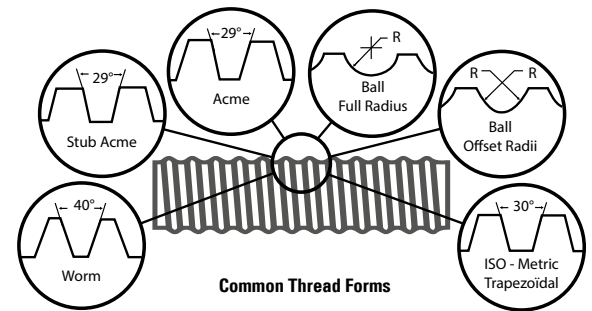
**Black profile = thread at 0° (no tilt)**

**Green profile = thread at 18° (with tilt)**



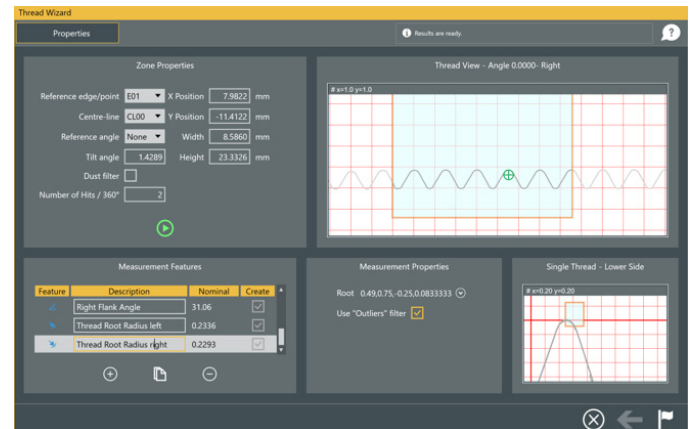
**True projected image, reveals correct flank form and root detail**

All types of threads can be measured such as, parallel, trapezoidal, tapered, round, square, conical, worm, ball-screw, bone-screws, dental implants, etc.

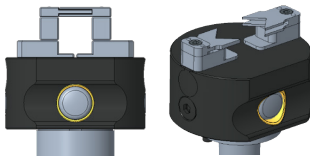


## New Thread wizard

New thread wizard software, making the programming of specific complex thread features easy, whilst enabling measurement of advanced thread forms within one zone, without the need to orientate the part.



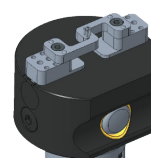
## New accessories



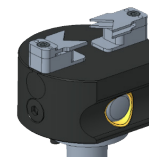
Sylvac 2-jaw gripper (0-20mm / MK2)  
Ref #902-6720



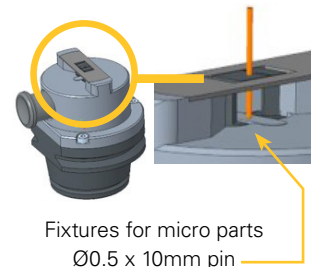
3-jaw chuck (OD Ø 0.5 - 40mm / ID  
Ø 12 - 36)  
Ref #902-6306  
Also available in Pneumatic (soon)



Internal jaws for  
2-jaw gripper



Pneumatic  
2-jaw gripper



Fixtures for micro parts  
Ø0.5 x 10mm pin

From January 2021

Coming soon

## Scan 25T - Diameter from 0.05 to 26 mm / Length up to 200 mm

Reference: 902-4025	Ø	Length
Measuring range	26 mm	200 mm
Holding capacity	51 mm	200 mm
Max error	$1.0 + D(\text{mm})/100 \mu\text{m}$	$3.0 + L(\text{mm})/200 \mu\text{m}$
Repeatability	0.5 $\mu\text{m}$	0.8 $\mu\text{m}$
Tilting (Threads)	30°	
Measuring speed	60 mm/s	
Move speed	120 mm/s	
Rotation speed	1 rps	
Max part weight	3 kg	
Machine dimensions	W450 x D520 x H590 mm	
Machine weight	60 kg	
Delivery	From January 2021	

