

TSC SLIPPER WRENCHES

CLÉS A DÉCLENCHMENT TSC

TSC SLIPPER DREHMOMENTSCHLÜSSEL

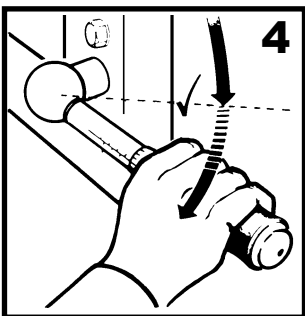
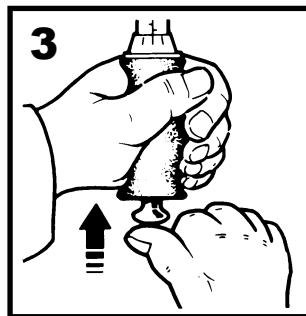
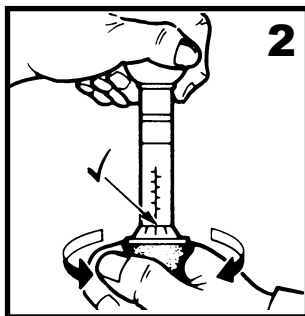
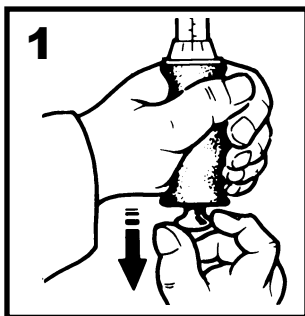
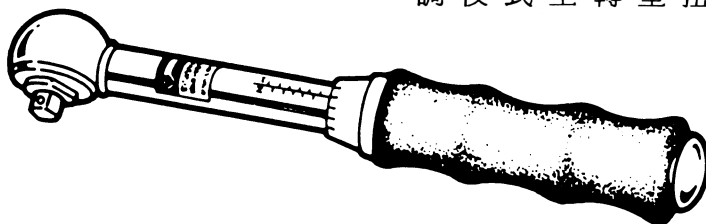
TSC LLAVES DE SALTO MEDIANTE LEVAS

TSC CHIAVI DINAMOMETRICHES A SLITTAMENTO

TSC NYCKLAR MED SLIRKOPPLING

TSC SLIPMENTSLEUTEL

調校式空轉型扭力扳手

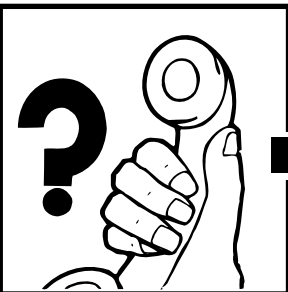
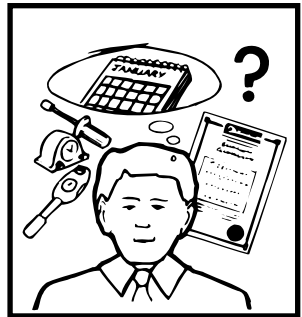
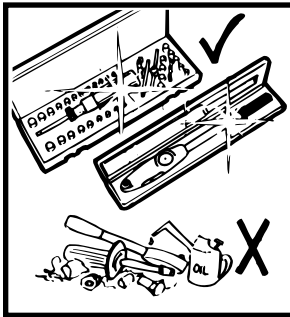
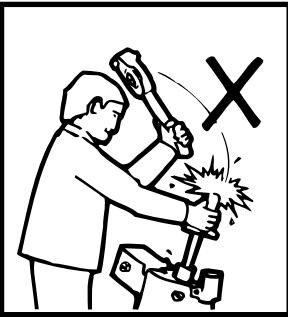
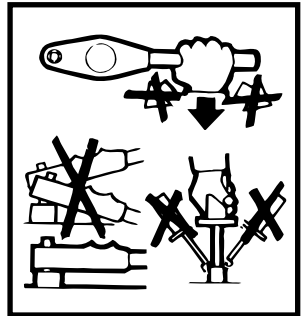
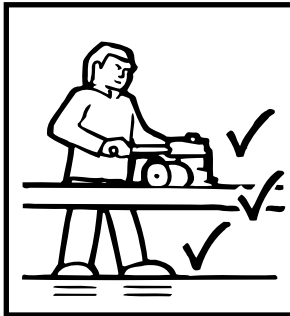


- ✓ = REQUIRED TORQUE SETTING
- ✓ = VALEUR DU COUPLE SOUHAITEE
- ✓ = GEWÜNSCHTE DREHMOMENT-EINSTELLUNG
- ✓ = AJUSTE DEL PAR REQUERIDO
- ✓ = COPPIA DI TARATURA RICHIESTA
- ✓ = MOMENTINSTÄLLNING
- ✓ = VOORGESCHREVEN MOMENTINSTELLING
- ✓ = 需要扭力設定

GENERAL INSTRUCTIONS

INSTRUCTIONS GENERALES
ALLGEMEINE ANWEISUNGEN
INSTRUCCIONES GENERALES
ISTRUZIONI
ALLMANNA INSTRUKTIONER
ALGEMENE INSTRUCITIE


綜合概論



MHH ENGINEERING Co. Ltd.

Bramley, Guildford,
Surrey GU5 0AJ, England

 ** (0)1483 892772

 ** (0)1483 898555

WWW.Torqueleader.com

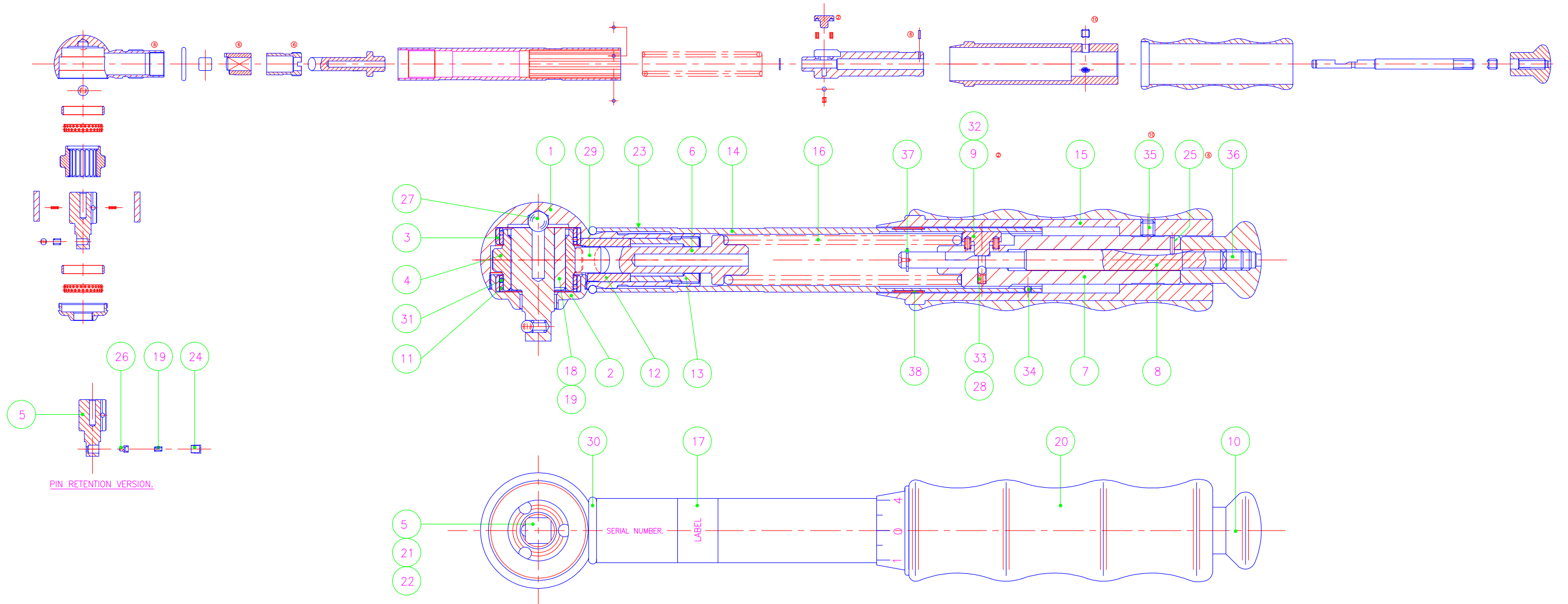
DO NOT SCALE

THIRD ANGLE PROJECTION

REMOVE BURRS & SHARP EDGES

METRIC DRAWING

EXPLODED VIEW - SCALE 1:1



ITEM	PART NO	DESCRIPTION	QTY	REMARKS	ITEM	PART NO	DESCRIPTION	QTY	REMARKS
1	C92560	HEAD TSC/P	1	S/A B92680, B92690, B92700 & B92710.	23	A20711	ESD LABEL (THIN)	1	
2	B92570	FRONT BEARING HOUSING	1		24	A59870	CUP	1	PIN RETENTION
3	A94640	LINER BUSH	2		25	P22620	DOWEL PIN 1.0mm DIA x 4.0mm Lg	1	
4	C92600	CAM TSC/P 5 LOBE	1	B92691	26	A64620	PIN	1	PIN RETENTION
5	C97550	CAM TSC/P 5 LOBE L/H	1	B92692	27	P19860	STEEL BALL 5mm	1	
	C92611	SPINDLE TSC/P BALL RET	1	& ITEMS 21, 22	28	A92800	DETENT BALL SPRING TSC	1	
	C92612	SPINDLE TSC/P PIN RET	1	& ITEMS 24, 25, 26	29	P19820	ROLLER C/CHROME	1	
	C97561	SPINDLE TSC/P BALL RET L/H	1	& ITEMS 21, 22	30	P19830	O RING SILICONE 70 11 x 12	1	RED
	C97562	SPINDLE TSC/P PIN RET L/H	1	& ITEMS 24, 25, 26	30	P30720	O RING NITRILE 70 11 x 12	1	BLACK
6	A92620	THRUST PIN (ANGLED)	1		31	P21480	STEEL BALL 1.0 DIA	120	
7	B92640	ADJUSTING SCREW	1		32	P19850	SPRING	2	
8	B92650	ACTUATOR ROD	1		33	P11730	STEEL BALL 2mm	1	
9	A92660	LOCKING KEY	1		34	P15040	STEEL BALL 1.5mm	2	
10	A92760	LOCK KNOB	1		35	P16200	SKT SET SCREW KCP M4x4	3	
11	A94940	BEARING CAGE	2		36	P16820	SKT SET SCREW M5 x 5 KCP	1	
12	A95160	ROLLER GUIDE	1		37	P18140	CIRCLIP M1800-0040	1	
13	A95170	GUIDE BUSH	1		38	P21490	TOLERANCE RING	1	
14	B92592	HANDLE BLACK	1	S/A B92690	39	P19530	CARTON	1	
	B92593	HANDLE GREY	1	S/A B92680	40	P19640	INSTRUCTION LEAFLET	1	
	B92594	HANDLE BLUE	1	S/A B92700					
				S/A B92710					
15	A92721	ADJUSTING SLEEVE BLACK - ENGRAVED	1	TSC 10		B92690	HEAD/HANDLE ASSEMBLY TSC 5		
	A92722	ADJUSTING SLEEVE BLUE - ENGRAVED	1	TSC 10		B92680	HEAD/HANDLE ASSEMBLY TSC 10		
	A92731	ADJUSTING SLEEVE GREY - ENGRAVED	1	TSC 5		B92710	HEAD/HANDLE ASSEMBLY TSC 45		
	A92732	ADJUSTING SLEEVE BLACK - ENGRAVED	1	TSC 5		B92700	HEAD/HANDLE ASSEMBLY TSC 90		
	A92733	ADJUSTING SLEEVE BLUE - ENGRAVED	1	TSC 5					
	A92741	ADJUSTING SLEEVE BLACK - ENGRAVED	1	TSC 90 + TSC100K		B29570	HEAD/HANDLE ASSEMBLY TSC 50K		
	A92751	ADJUSTING SLEEVE GREY - ENGRAVED	1	TSC 45		B29580	HEAD/HANDLE ASSEMBLY TSC 100K		
	A92752	ADJUSTING SLEEVE BLACK - ENGRAVED	1	TSC 45 + TSC50K					
16	A92770	MAINSRING	1	TSC 5 / 45					
	A92780	MAINSRING	1	TSC 10 / 90					
17	A92133	LABEL	1	TSC 5 / 45					
	A92132	LABEL	1	TSC 10 / 90					
18	A12060	PAWL	2						
19	A59850	PAWL SPRING (TSN 25/55)	2						
20	A74752	HANDGRIP (TSN 25)	1						
21	A73670	SPRING BALL CATCH	1	BALL RETENTION					
22	P15020	STEEL BALL 3mm	1	BALL RETENTION					

LUBRICATION DETAILS:

1. ROCOL A.S.P. TO BE APPLIED TO ROLLER, ROLLER GUIDE, AND THRUST PIN.
2. LIGHT MACHINE OIL TO LUBRICATE RATCHET MECHANISM.
3. TO LUBRICATE ADJUSTING SCREW COVER OUTSIDE WITH WHITE FM GREASE.
4. APPLY A SMALL AMOUNT OF ASP TO EACH END OF SPRING PRIOR TO ASSEMBLY.
5. ROCOL A.S.P. TO BE APPLIED TO ACTUATOR ROD WHERE LOCKING KEY TRAVELS.
6. ROCOL A.S.P. TO BE APPLIED WHERE ACTUATOR ROD TOUCHES ADJUSTING SCREW, AND WHERE LOCKING KEY TOUCHES ADJUSTING SCREW.

12245B	15		
12134B	14		
11955B	13		
11402B	12		
10932B	11		
10826B	10		
10528B	9		
10143B	8		
9617C	7		
8322C	6		
8061C	5		
7936C	4		
7631C	3		
7266C	2		
NEW	1		
MOD	ISS.		

PRINCIPAL DIMS ARE MILLIMETRES	SCALE 2:1	MATERIAL SIZE & SPEC	USED ON ASSY No.
UNSPECIFIED TOLS:- 2 DEC. PLACE ± 0.10 1 DEC. PLACE ± 0.25 ANGLES ± 0.5 deg.	M/C AT	HEAT TREATMENT	DRAWN BY S.REDMAN DATE 12.07.95 AUTOCAD FILE LOCATION MHHDRO3\GA\
FINISH AS STATED		DRAWING No. D92940	

M.H.H. ENG. Co. Ltd.
BRAMLEY, GUILDFORD, SURREY.

DESCRIPTION:
GENERAL ARRANGEMENT.
TSC 5, 10, 45, 90.